

 **H2O X5<sup>®</sup>** User Manual



© 2013 Thane International, Inc.

"H2O", "H2O X5" and associated logos and variations are trademarks of Thane International, Inc. and/or its subsidiaries.

Manufactured by:  
Thane Direct UK,  
London WC2A 3LH  
0844 5712654  
[www.thane.tv](http://www.thane.tv)

Model Number: KB - 6622V - 1



# Thank You!

Thanks for choosing the H2O X5® Steam Cleaner from Thane. We want you to get the most from your product, so we'd like to encourage you to read this user manual. It will tell you everything you need to know about your H2O X5® appliance, as well as giving you handy hints and tips for fast, effective steam cleaning all around your home.

If you have any questions about your product, please contact Thane customer services on 0844 571 2654 (ROI 01 431 1361) and we will be happy to help you.

Don't forget to visit [www.X5mop.tv](http://www.X5mop.tv) where you can shop online for all your genuine H2O X5® accessories and find out more about the H2O™ family from Thane.

Enjoy your Thane product!



## Contents

Important safeguards .....	3-5
Key features .....	6
Accessories .....	7
How to assemble the H2O X5® unit .....	8-10
How to use the H2O X5® unit .....	11-16
Safety pressure release valve	
Hand-Held Steamer .....	17
How to assemble the Hand-Held Steamer .....	17-18
How to assemble the accessories .....	19-20
How to use the Hand-Held Steamer .....	21-22
How to use the accessories .....	23-28
After use .....	27
Cleaning and maintenance .....	30-32
How to decalcify the water tank interior	
• Cleaning procedure to remove lime scale	
By using cleaning pin	
By using descaling solution	
• Cleaning blocked steamer accessories	
Troubleshooting guide .....	31
Notes .....	32
H2O X5® accessories .....	33-34



# Important Safeguards

**PLEASE READ CAREFULLY. FAILURE TO FOLLOW THE PRODUCT INSTRUCTIONS WILL VOID YOUR WARRANTY.**

**READ ALL INSTRUCTIONS BEFORE USING THIS STEAM CLEANER.**

As with any electrical appliance, basic precautions should always be observed when using this product, including the following:

**⚠ WARNING**

1. Verify that the main voltage indicated on the product corresponds with the voltage of your electrical outlet.  
**Rated voltage: 110~120V, 60HZ, 1300W**  
**or**  
**220~240V, 50/60HZ, 1300W**
2. To provide continued protection against risk of electric shock, only connect to properly grounded outlets.
3. This product is designed for domestic use only.
4. Do not use outdoors.
5. Do not leave the H2O X5® appliance unattended while plugged in. Unplug the electrical cord when not in use and before servicing.
6. Do not allow the H2O X5® appliance to be used as a toy. Young children should be supervised to ensure that they do not play with the appliance. Close attention is necessary when used near children, pets or plants.
7. This appliance is not intended for use by persons (including children) with reduced physical, sensory or mental capabilities, or lack of experience and knowledge, unless they are under supervision have been instructed how to use the appliance by a person responsible for their safety.
8. Never direct steam towards people, animals or plants.



9. Do not immerse the H2O X5® appliance in water or other liquids.
10. Do not use with damaged cord or plug. If the H2O X5® appliance is not working as it should, has been dropped, damaged, left outdoors, or immersed in water, contact the distributor. If the supply cord is damaged, it must be replaced by the manufacturer to avoid hazard.
11. Do not pull or carry the unit by the cord, use the cord as a handle, close a door on the cord, or pull the cord around sharp edges or corners. Keep the cord away from heated surfaces.
12. Never force the plug into an outlet.
13. Do not use extension cords or outlets with inadequate electrical current carrying capacity.
14. Unplug after each use. To safely unplug, grasp the plug and gently pull, do not unplug by pulling on the cord.
15. Do not handle the plug or the H2O X5® appliance with wet hands or operate without shoes.
16. Do not insert any objects into openings in the unit. Do not use with any opening blocked.
17. Do not use the mop head without floor cloth in place.
18. Do not use without water in the water tank.
19. Use extra caution when using on stairs.
20. Store your H2O X5® appliance indoors in a cool, dry place.
21. Keep your work area well lit.
22. Never put hot water or any other liquids such as aromatic, alcohol based or detergent products into the water tank with the exception of H2O™ Steam Scents. This will make the operation unsafe and damage the unit.
23. Always keep the output for the steam clear. Avoid placing the steam opening on soft surfaces which may block the flow of steam. Keep the openings free from lint, hair and other potential obstructions to ensure proper steam flow.
24. Use only as directed in this manual. Use only manufacturer's recommended accessories.

25. Use of attachments not provided or sold by the manufacturer or authorised resellers may cause fire, electric shock or injury.
26. The liquid or steam should not be directed towards equipment containing electrical components, such as the interior of ovens.
27. Do not expose to rain.
28. Stop using the H2O X5® appliance if you observe water leakage, and contact the manufacturer.
29. Do not use the H2O X5® appliance in enclosed spaces that contain flammable, explosive or toxic vapor such as paint thinner or oil-based paint.
30. Do not use on leather, wax polished furniture or floors, unsealed hardwood or parquet floors, synthetic fabrics, velvet or other delicate steam-sensitive materials. Always check your floor manufacturer's cleaning instructions prior to using this product, particularly when using on laminate flooring.
31. Do not use for space heating purposes.
32. Unplug appliance from outlet before servicing.
33. Do not touch the H2O X5® steam outlet when hot or place the product on hot surfaces.
34. Do not place on or near a hot gas or electric burner, or in a heated oven.
35. To disconnect the unit, turn the power switch ( O / I ) to the "OFF" position, then remove plug from wall outlet.
36. Do not use appliance for other than its intended use.
37. Care should be taken when using appliance due to emission of steam.
38. To avoid circuit overload, do not operate another appliance on the same socket (circuit) as the steam cleaner.



**WARNING**

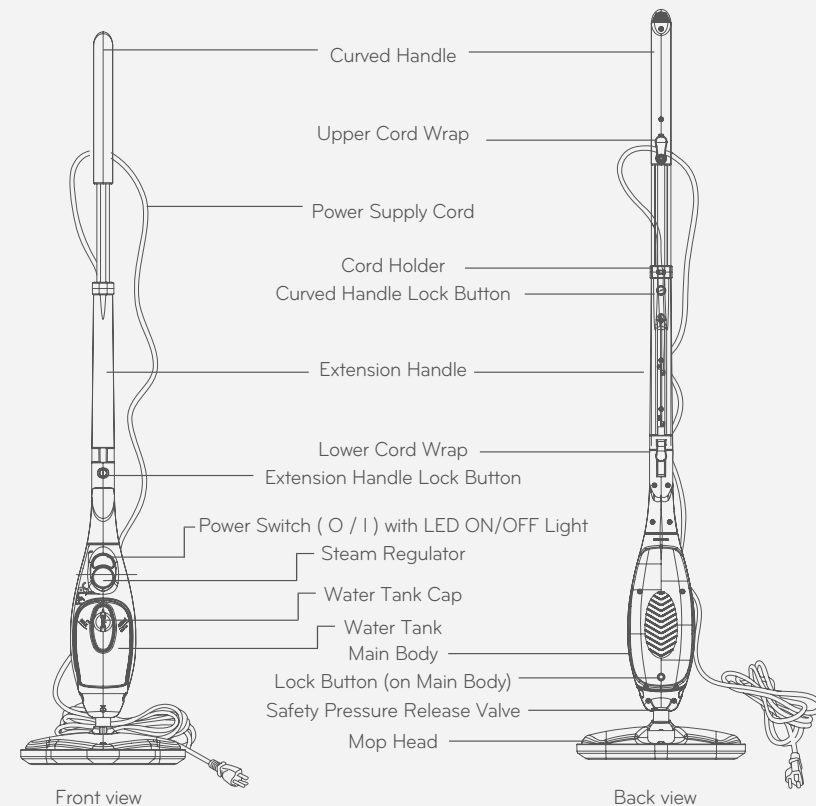
**DANGER OF SCALDING**

**HOUSEHOLD USE ONLY**

Commercial use of this unit voids the manufacturer's warranty.

**SAVE THESE INSTRUCTIONS**

## Key Features



## Accessories Included





# Accessories included continued



Super Absorbent Duster Cloth



Extension Hose



Garment Steaming Cloth



Super Absorbent Window Cleaning Cloth



Duster Tool



Window Cleaning / Garment Steaming Tool



# How To Assemble The H2O X5® Steam Cleaner

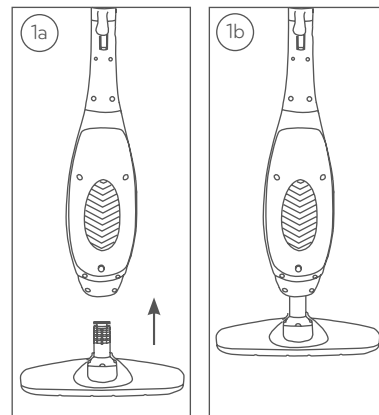


Please make sure that the unit is unplugged from an electrical outlet and the power switch ( O / I ) is in the "OFF" ( O ) position before assembling the unit or changing the accessories.

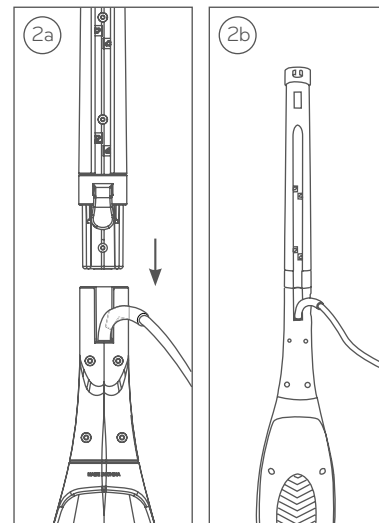
1. Attach the mop head to the main body as follows:

Insert the swivel joint into designated hole in the main body until it locks in place with the locking button on the main body (you will hear a clicking sound).

**Make sure that the mop head is securely locked into place before usage.**

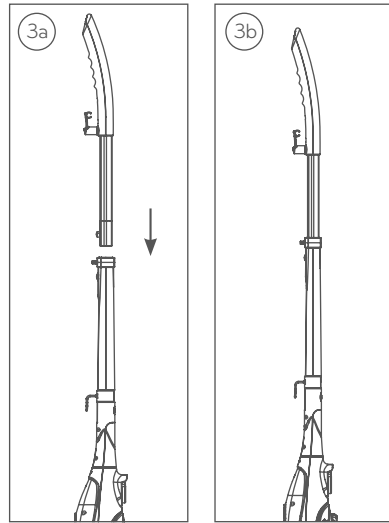


2. Insert the extension handle into the designated opening in the main body until it gets locked in place with the extension handle locking button.



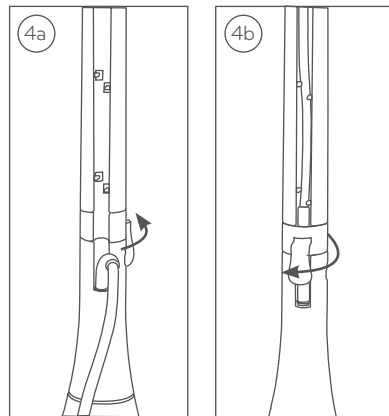
3. Insert the curved handle into the designated opening of the extension handle until it gets locked in place with the curved handle locking button.

**Make sure both parts, the extension handle and the curved handle, are secured in place before usage.**

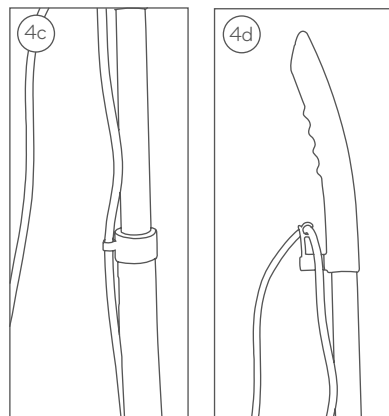


4. Turn the lower cord wrap to align the cord channel opening with the cord channel in the extension handle as illustrated in Fig. 4a.

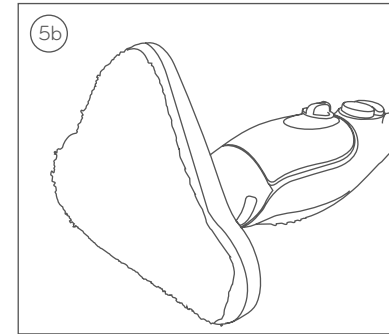
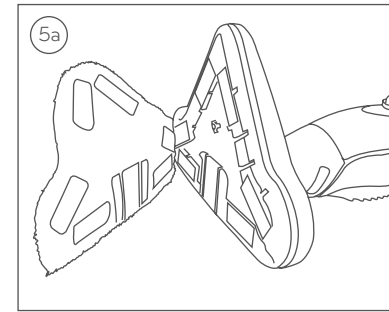
Insert the power supply cord all the way in its channel and turn the lower cord wrap to lock the power supply cord as illustrated in Fig. 4b.



Insert the power supply cord into the cord holder located at the top of the extension handle as illustrated in Fig. 4c and then insert power supply cord into the upper cord wrap as illustrated in Fig. 4d.

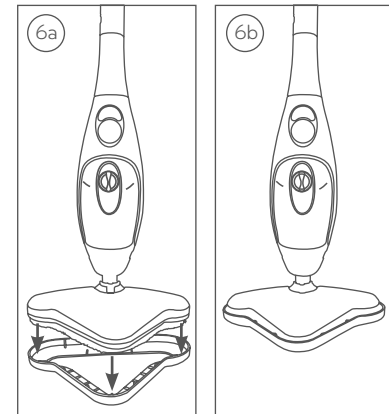


5. Align the microfibre cloth with the bottom of the mop head so that the loops on the cloth meet the gripping strips on the mop head (Refer to Fig. 5a). Press into place to ensure that the microfibre cloth is securely attached.



6. When using the H2O X5<sup>®</sup> appliance on carpet surfaces:

Place the mop head, with microfibre cloth in place, on top of the carpet glider as illustrated in Fig. 6a. Do not attempt to use the H2O X5<sup>®</sup> appliance on carpet/rug surfaces without the carpet glider in place.



**NOTICE**

**Never use the carpet glider on surfaces that are prone to scratching.**

**CAUTION**

**Never assemble or remove the accessories while the unit is in operation.**

# How To Use The H2O X5® Steam Cleaner

## PLEASE READ BEFORE USE

The H2O X5® Steam Cleaner is designed to thoroughly clean floor surfaces, such as marble, ceramic, carpet, stone, linoleum, and sealed hardwood floors and parquet. Not all floor types are suitable for steam cleaning.

The heat and steam action may remove the wax on surfaces treated with wax. Do not use on unsealed flooring or let unit stand on any wood or heat sensitive floor for an extended period of time. This could cause the wood grain to rise, in addition to other types of damage.

When using on vinyl, linoleum or any other heat sensitive floors, use extra caution. Too much heat can melt glue in the flooring. Use only on laminated flooring that has been laid professionally and without any gaps or cracks that would permit the entry of moisture.

Test the H2O X5® Steam Cleaner on a small isolated area of your flooring prior to overall use on any floor surface.

Always check the use and care instructions of your flooring manufacturer or distributor before using the H2O X5® Steam Cleaner.

When in doubt, please consult a flooring specialist. Only use the carpet glider on carpeting and rugs. Use of the carpet glider on other floor surfaces will cause streaking and possibly scratching.

### NOTICE

**This product emits steam and creates moisture. Water marks, discoloration or damage to the floor surface can occur if the unit is left operating too long in one place.**

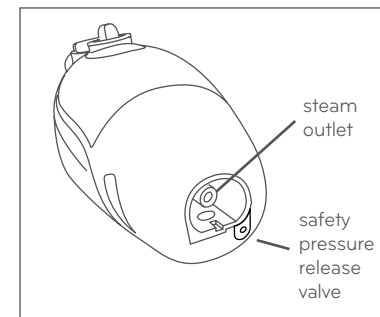
## SAFETY PRESSURE RELEASE VALVE

The safety pressure release valve is designed to relieve pressure inside the water heater, by discharging hot steam or water through the safety pressure release valve, if the steam nozzle is blocked due to lime scale build up.

The safety pressure release valve is located next to the steam nozzle on the main body; please refer to the figure below.

### ⚠ WARNING

**Steam or water discharged from the safety pressure release valve can be very hot. At all times during use, always make sure to keep body parts clear of the safety pressure release valve to avoid being burned by hot steam or water in the event of discharge.**



Discharge of steam or water from the safety pressure release valve is an indication of an abnormal condition. In such cases, immediately stop using the H2O X5® appliance, turn it off and unplug it from the outlet. Let the unit cool down and clean the steam nozzle according to the cleaning and maintenance section in this user manual. Once the lime scale has been removed, the safety pressure release valve will no longer discharge steam or water and the unit will begin to produce steam normally.

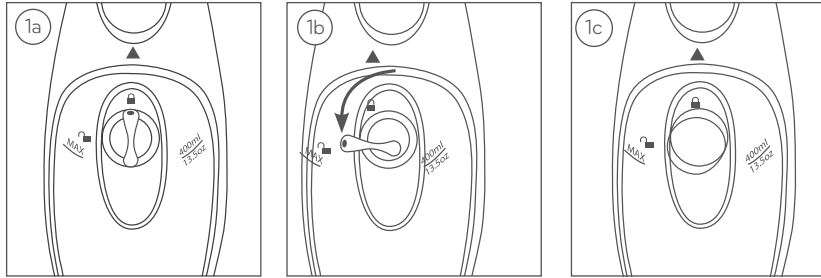
*Note: It is very important to remove lime scale on a regular basis. During normal operation, no steam or water should be discharged from the safety pressure release valve.*

1. Fill the water tank with water:



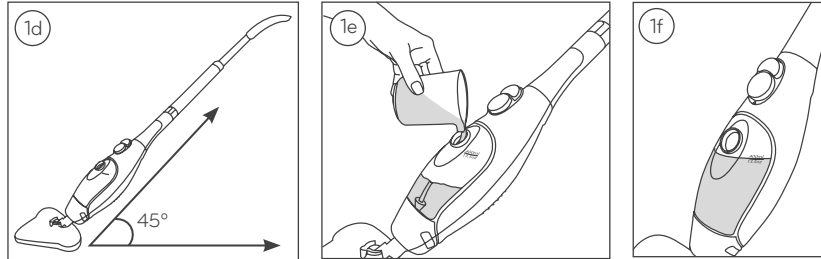
**Make sure that the H2O X5® appliance is unplugged.**

Turn the water tank cap counter-clockwise approximately 90° to the "OPEN" position and remove the cap as illustrated in Figs. 1a, b and c.



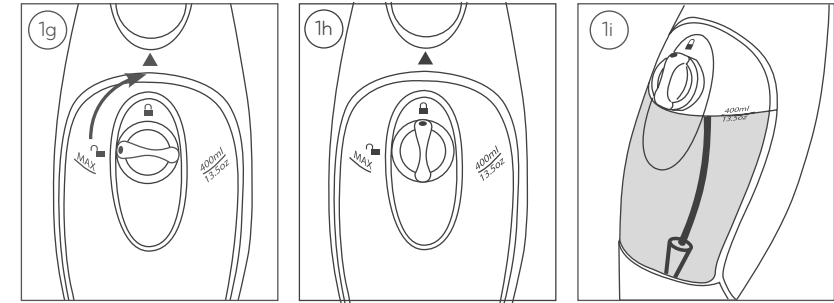
Hold the mop at a 45° angle as illustrated in Fig. 1d and add water in the tank up to the MAX level by using the measuring cup.

Do not overfill. The maximum tank capacity is 400 ML/13.5 OZ.



Replace the water tank cap and turn clockwise approximately 90° to the "CLOSE" position until the cap is tightened securely.

The H2O X5® appliance uses tap water. However, in areas with hard water, distilled water should be used for better performance. Make sure the copper cone inside the water tank is always submerged in water (As illustrated in Fig. 1i) while operating the H2O X5® appliance.



Never put cleaning detergents or scented products into the H2O X5® appliance, other than H2O™ scents. Use of any other detergents or scented products could be unsafe and damage the unit.

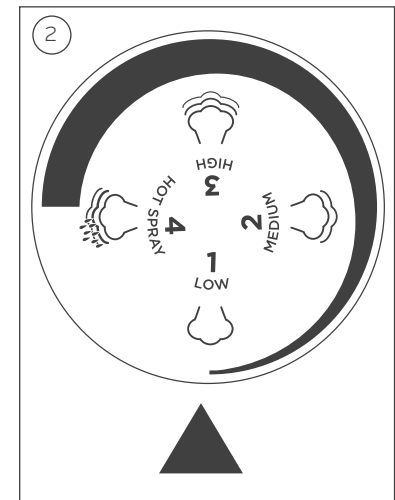
2. Select one of the following Steam Regulator positions:

**To avoid streaks and puddles select the appropriate setting for which you will be using the H2O X5® appliance. For less steam use settings 1 and 2, for more steam use settings 3 and 4.**

1 – Low, 2 – Medium, 3 – High and 4 – Hot Spray

- 1 – Low and 2 – Medium setting: Ideal for cleaning all hard floors, such as linoleum, ceramic, marble, sealed hardwood, etc.
- 3 – High setting: Ideal for cleaning carpets and rugs.
- 4 – Hot spray setting: Ideal for cleaning bathrooms, kitchens, window sills, car wheels, etc.

You can change the steam regulator position and change the steam output while operating the H2O X5® appliance.



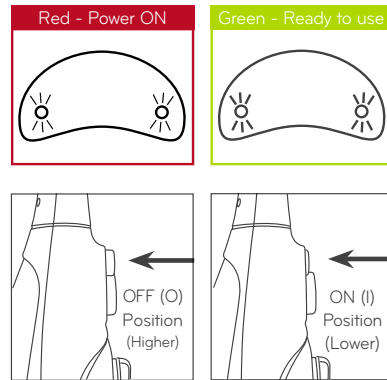


- Once the unit has been fully assembled and filled with water, plug in the power cord to a grounded electrical outlet. The RED light - power indicator, will indicate when power is on. Power switch ( O / I ) is in the OFF ( O ) position (higher position). Wait for the ready-to-use indicator to turn green - approximately 20 - 30 seconds. GREEN light will turn on when the steam mop is ready for use.

When the ready-to-use indicator light turns green press the power switch ( O / I ) to the ON ( I ) position (lower position). The mop will start emitting steam.

To stop emitting steam turn OFF ( O ) the unit by pressing the power switch ( O / I ) again.

If the power switch ( O / I ) is pressed (lower position) prior to ready-to-use light indicator turning green, water from the previous use will not be heated and will be forced out by present steam and will cause puddling to occur. This may also happen if the power switch was left in the ON ( I ) position (lower position) from the previous use and the unit was disconnected by unplugging only.



Make sure to turn the unit OFF after each usage and then disconnect from the electrical outlet so the unit is in the OFF ( O ) position when used next time.

- Slowly pass over the surface to be cleaned. The absorbent cloth picks up the dirt loosened by the steam. Apply steam liberally. Keep a towel handy and wipe away any excess water that may accumulate.
- When the H2O X5<sup>®</sup> appliance stops emitting steam, simply turn OFF and unplug the appliance, refill the Water Tank and continue cleaning.

**WARNING**

Never leave the H2O X5<sup>®</sup> appliance unattended while plugged in.

**For Best Results:**

- Sweep or vacuum floor prior to using the H2O X5<sup>®</sup> appliance.
- To avoid puddling of water, the microfibre cloth must be clean and dry for use. To replace the cloth, proceed as follows: Let the cloth cool down, remove cloth from unit, replace with a new microfibre cloth (optional item) and continue use. Select low steam regulator position.
- To help sanitise an area of your floor, leave the H2O X5<sup>®</sup> appliance at a high steam setting over the area for about 10 seconds, but no longer than 15 seconds.

**NOTICE**

Do not carry out this procedure on heat and steam sensitive floors.

**IMPORTANT**

- Never steam on one spot for too long. This can cause floor surface damage.
- Do not put hands or feet under the steam mop. Unit gets very hot.
- During use a pulsing noise may be heard indicating that the mop is producing steam. This noise is normal.
- There may be some minor "spitting" of water mixed with the steam. This is also normal.
- The force and heat of the steam may adversely affect certain materials. Always check the suitability of using steam on a surface by carrying out a preliminary test on a hidden area.

*Thane Direct and its affiliated companies assume no liability for personal injury or property damage resulting from the misuse of the H2O X5<sup>®</sup> appliance, including the failure to comply with the instructions contained in this user manual or provided by the manufacturer or distributor of the treated surface.*



# Hand-Held Steamer

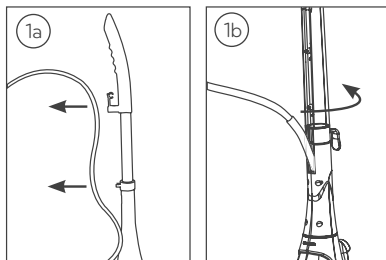
The hand-held steamer is an ideal portable cleaner for use on work surfaces, countertops, sinks, windows, mirrors, tiles and spot cleaning on floors, carpets and rugs. Use it with the jet nozzle, brass brush or nylon brush attachments to spray away dirt, grease, mould and more.

## How To Assemble The Hand-Held Steamer

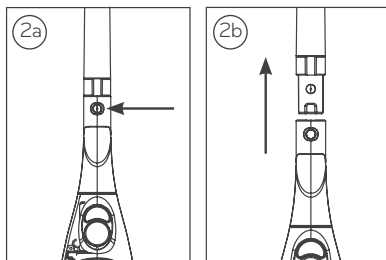
### CAUTION

Make sure that the H2O X5® appliance is unplugged before assembly.

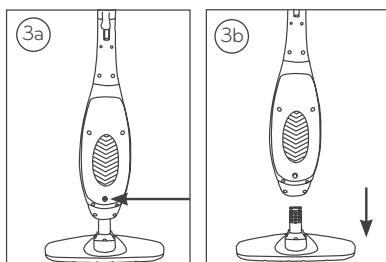
1. Remove the power supply cord from the upper cord wrap and cord holder, turn the lower cord wrap to release the cord and remove the power supply cord from its channel as illustrated in Figs. 1a & 1b.



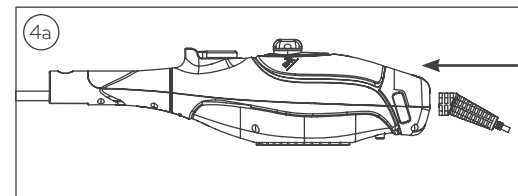
2. Press the extension handle locking button and remove the extension handle and the curved handle from the main body.



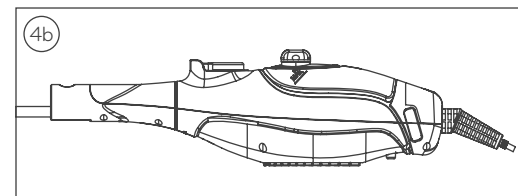
3. Press the locking button on main body and remove the mop head.



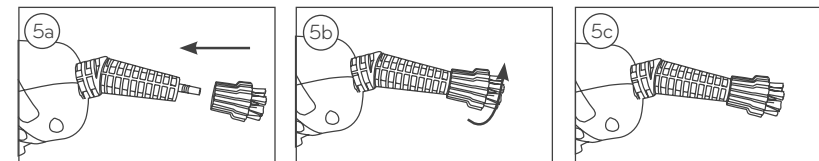
4. To attach the jet nozzle: Insert the jet nozzle into the designated hole in the main body until it locks in place with the locking button on the main body (you will hear a clicking sound), as illustrated in Fig. 4a.



Make sure that the jet nozzle is securely locked in place before usage.



5. Attach either the round nylon brush or round brass brush by screwing onto the threaded end of the jet nozzle as illustrated in Figs. 5a, b and c. To remove either round brush, unscrew from the jet nozzle.



- The round nylon brush is great for cleaning smooth hard surfaces, such as toilets, sinks, and kitchen counters, etc.
- The round brass brush is great for cleaning coarse or metal surfaces, such as brick floors, car wheels, metal doors, and metal frames, etc.
- Both brushes can also effectively clean the grease on pans, stoves and ovens in the kitchen. They can be used with soap or detergent to clean dirty areas. Soap or detergent can be sprayed directly onto the dirty area before steam is applied.

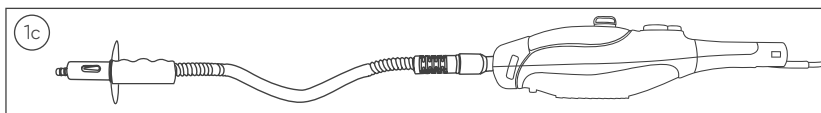
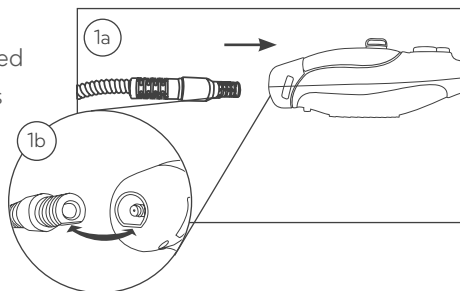
### NOTICE

Never use the round brass brush on surfaces that are prone to scratching.

# How To Assemble The Accessories

Remove the mop head by pressing the locking button on the main body or remove the jet nozzle following the same procedure.

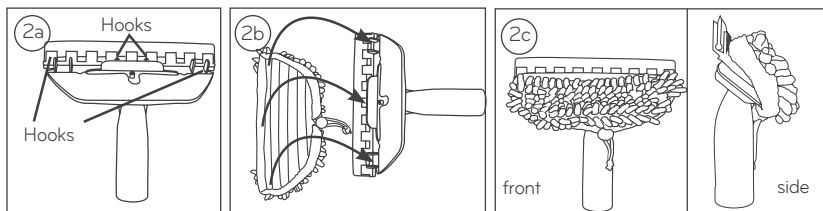
1. Insert the designated end of the extension hose into the designated hole in the main unit until it locks in place with the locking button on the main body (you will hear a clicking sound)



as illustrated in Figs. 1a, 1b & 1c. make sure that the extension hose is securely locked into place before use.

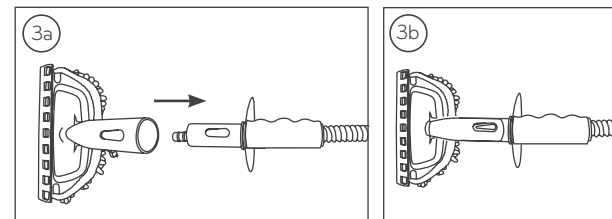
## Window Cleaning Tool

2. Loosen up the drawstring on the super absorbent cloth and install the super absorbent cloth onto the designated hooks on the window cleaning tool frame and pull up the drawstring to secure the super absorbent cloth in place. NOTE: Do not cover the squeegee blade. Make sure to attach the super absorbent cloth to all hooks on the cleaning tool frame to prevent slipping or falling from the frame during use (as shown in Figs. 2a, 2b & 2c).



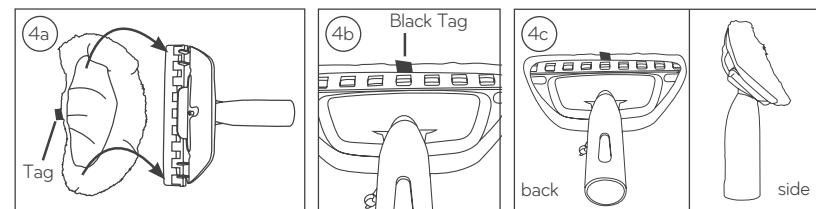
3. Attach the window cleaning tool to the extension hose as follows: Align the lock button on the extension hose with the designated hole on the window cleaning tool frame and then push in the extension hose

until it locks in place (as illustrated in Figs. 3a & 3b).

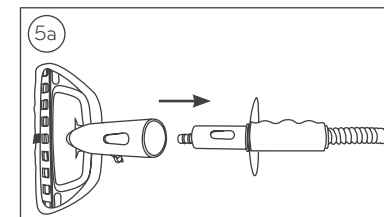


## Garment Steaming Tool

4. To use the window cleaning tool as a garment steamer, install the microfiber cloth or the garment cloth over the window cleaning/garment steamer tool (as illustrated in Fig. 4a, 4b & 4c).

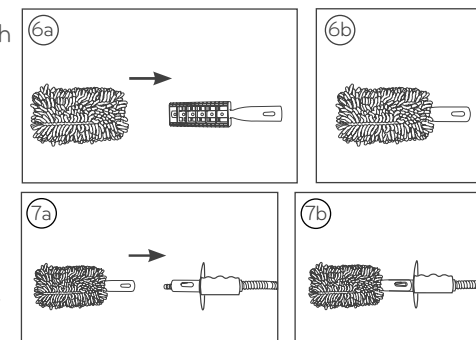


5. Attach the window cleaning/garment steamer tool to the extension hose as follows: Align the locking button on the extension hose with the designated hole on the window cleaning/garment steaming tool frame and then push the extension hose until it locks in place (as illustrated in Fig. 5a)



## Duster Tool

6. Install the duster cleaning cloth onto the duster frame (as illustrated in Figs. 6a & 6b).
7. Attach the duster frame to the extension hose as follows: Align the locking button on the extension hose with the designated hole on the duster frame and then push in the extension hose until it locks in place (as illustrated in Fig. 7b).



# How To Use The Hand-Held Steamer

**CAUTION**

Make sure that the H2O X5® appliance is unplugged.

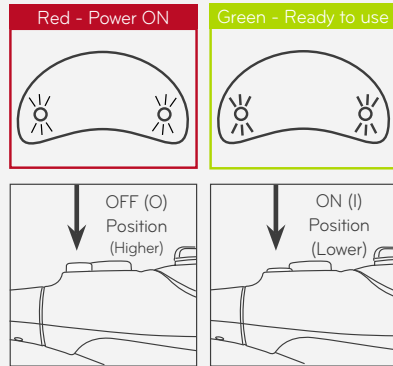
1. Fill the water tank with water. Please refer to the "How to use the H2O X5® Steam Cleaner" section in this manual. Attach either the round nylon brush or the round brass brush as explained in the "How to assemble hand-held Steamer" section in this manual.

2. Select one of the following steam regulator positions:  
**To avoid streaks and puddles select the appropriate setting for which you will be using the H2O X5® appliance.**  
**For less steam use settings 1 and 2, for more steam use settings 3 and 4.**

1 - Low, 2 - Medium, 3 - High or 4 - Hot Spray.

You can change the steam regulator position and the steam output while operating the H2O X5® appliance.

3. Once the unit has been fully assembled and filled with water, plug in the power cord into a grounded electrical outlet. RED light - power indicator will indicate when power is on. Power switch ( O / I ) is in the OFF ( O ) position (higher position). Wait for the ready-to-use indicator to turn green - approx 20 - 30 secs. GREEN light will turn on when the steam mop is ready for use. When the ready-to-use indicator light turns green press the power switch ( O / I ) to the ON ( I ) position (lower position). The hand-held steamer will start emitting steam. To stop emitting steam, turn OFF the unit by pressing the power switch ( O / I ) again. If the power switch ( O / I ) is pressed (lower position) prior to the ready-to-use light indicator turning green, water from previous use will not be heated and



will be forced out by present steam. This may also happen if the power switch ( O / I ) was left in the ON ( I ) position (lower position) after previous use and the unit was disconnected by unplugging only.

Make sure to turn the unit off after each use and then disconnect from the electrical outlet so the unit is in the OFF ( O ) position when used next time.

4. Slowly pass over surfaces to be cleaned. Apply steam liberally. Keep a towel handy and wipe away any excess water that may accumulate.
5. When the hand-held steamer stops emitting steam, simply turn OFF and unplug the unit, refill the water tank and continue cleaning.  
 To sanitize your work surfaces, kitchen countertops, sinks, bathrooms, etc., use the hand-held steamer over the same area for about 15 seconds.

**NOTICE**

Do not carry out this procedure on heat and steam sensitive surfaces. The force and heat of the steam may adversely affect certain materials. Always check the suitability of using the steamer on a particular surface by first testing a hidden area.

**WARNING**

**Never direct steam towards people, animals or plants.**

**NOTICE**

- Do not use the steam to clean frozen windows.
- Be careful when using the steamer on glass, as it may break.
- Do not use steamer on leather, wax polished furniture or waxed or unsealed floors, synthetic fabrics, velvet or other delicate steam-sensitive materials.

**Steam or water discharged from the safety pressure release valve can be very hot. At all times during use, always make sure to keep body parts clear of the safety pressure release valve to avoid being burned by hot steam or water in the event of discharge.**

*Thane Direct and its affiliated companies assume no liability for personal injury or property damage resulting from the misuse of the H2O X5® appliance, including the failure to comply with the instructions contained in this User Manual or provided by the manufacturer or distributor of the treated surface.*

# How To Use The Accessories

## Window Cleaning Tool with Super Absorbent Cloth

Make sure that the H2O X5® appliance is unplugged.

1. Fill the water tank with water. Please refer to the "How to use the H2O X5® Steam Cleaner" section in this manual.
2. Install the super absorbent cloth onto the window cleaning tool and attach the window cleaning tool to the extension hose as described in the "How to assemble the accessories" section in this manual.
3. Follow Steps 2 and 3 described in the "How to use the hand-held steamer" section in this manual.
4. Hold the hand-held steamer in one hand and grasp the handle grip on the extension hose with the other hand as shown.
5. Slowly pass over glass (or other similar) surface to be cleaned. Apply steam liberally. The super absorbent cloth picks up the dirt loosened by the steam, and the squeegee blade removes any remaining trails of water.  
Keep a towel handy and wipe away any excess water that may accumulate.



### ⚠ CAUTION

Pulling on the extension hose with excessive force will damage it, possibly resulting in a steam leak.

### ⚠ WARNING DANGER OF SCALDING

**Do not touch the window cleaning tool/super absorbent cloth during usage, as these components can get extremely hot.**

**Keep the extension hose away from your body and avoid touching the hose as it can get hot.**

6. When the hand-held steamer stops emitting steam, simply turn off and unplug the unit, refill the water tank and continue cleaning.
7. Once you finish cleaning, allow the super absorbent cloth to cool down and carefully remove it from the window cleaning tool, as this cloth could still be hot.

### NOTICE

- Do not use the steam to clean frozen windows.
- Be careful when using the steamer on glass, as it may break.

## Duster Tool with Super Absorbent Cloth

Make sure that the H2O X5® appliance is unplugged.

1. Fill the water tank with water. Please refer to the "How to use the H2O X5® Steam Cleaner" section in this manual.
2. Install the super absorbent cloth onto the duster frame and attach the duster to the extension hose as described in the "How to assemble the accessories" section in this manual.
3. Select one of the following steam regulator positions:  
1 – Low, 2 – Medium or 3 – High  
**Do not use 4 - Hot spray steam setting when using the duster.**  
You can change the steam regulator position and change the steam output while operating the H2O X5® appliance.
4. Follow step 3 described in the "How to use the hand-hand steamer" section in this manual.
5. Hold the hand-held steamer in one hand and grasp the handle grip on the extension hose with the other hand as shown.
6. Slowly pass over surface to be cleaned. The super absorbent cloth picks up the dirt loosened by the steam. Keep a towel handy and wipe away any excess water that may accumulate.



### ⚠ CAUTION

Pulling on the extension hose with excessive force will damage it, possibly resulting in a steam leak.

### ⚠ WARNING

**DANGER OF SCALDING**

Do not touch the duster/super absorbent cloth during usage, as these components can get extremely hot.

Keep the extension hose away from your body and avoid touching the hose as it can get hot.

- When the hand-held steamer stops emitting steam, simply turn off and unplug the unit, refill the Water Tank and continue cleaning.
- Once you finish cleaning allow the duster super absorbent cloth to cool down and carefully remove it from the duster frame, as the super absorbent cloth could still be hot.

## Garment Steaming Tool with Microfibre Cloth

Make sure that the H2O X5® appliance is unplugged.

- Fill the Water Tank with water. Please refer to the "How to use the H2O X5® Steam Cleaner" section in this manual.
  - Install the garment steamer cloth onto the window cleaning/garment steaming tool and attach the window cleaning/garment steaming tool to the extension hose as described in the "How to assemble the optional accessories" section in this manual.
  - Select one of the following steam regulator positions:
    - Low or 2 - Medium when using the garment steamer.

**Do not use 3 - High and 4 - Hot Spray steam settings when using the garment steamer.**

You can change the steam regulator position and steam output while operating the H2O X5® appliance.
- Follow Step 3 described in the "How to use the Hand-Held Steamer" section in this manual.
  - To steam a garment, place item of clothing on the hanger and steam the garment directly.

- Hold the hand-held steamer in one hand and grasp the handle grip on the extension hose with the other hand as shown.

Slowly slide the garment steamer head vertically, from the top to the bottom of the garment.

You may also reverse this motion and steam from the bottom to the top.

Curtains and draperies can be steamed while they are hanging.



### NOTICE

Please refer to the label on item of clothing to check if garment can be steamed. Some fabrics like leather, suede, and velvet may not be suitable for steaming. If you are not sure then steam a small part of the inside of the garment to test that it does not damage the fabric before steaming the entire garment or fabric.

### CAUTION

Pulling on the extension hose with excessive force will damage the hose, possibly resulting in a steam leak.

### WARNING

### DANGER OF SCALDING

Do not touch the garment steamer tool/cloth during usage, as these components can get extremely hot.

Keep the extension hose away from your body and avoid touching the hose as it can get hot.

- When the hand-held steamer stops emitting steam, simply turn off and unplug the unit, refill the water tank and continue cleaning.
- Once you finish cleaning allow the garment steaming cloth to cool down and carefully remove it from the window cleaning tool, as the garment steaming cloth could still be hot.



## After Use

1. Unplug power cord from outlet.
2. Allow cleaning cloths to cool down and carefully remove the cleaning cloth from mop head, as cleaning cloth could still be hot.
3. Any water remaining in the water tank should be emptied prior to appliance storage. Always empty the water tank at the end of each use.
4. Let any water (that may remain as a product of condensation) drain from the steam opening prior to storing the appliance.
6. Wipe all surfaces of the H2O X5<sup>®</sup> appliance with a soft cloth. Store in a protected, dry area.
7. Please store the unit in a cool and dry place when not in use. Do not leave it exposed to sunlight or rain.
8. Upright storage of the H2O X5<sup>®</sup> appliance with a wet mop cloth may result in the formation of white marks on your floor. To remove the white marks, clean area with white vinegar. Make sure to remove the mop cloth before storage.



## Cleaning And Maintenance

### WARNING

BE SURE THAT THE UNIT IS DISCONNECTED FROM THE POWER OUTLET WHEN PERFORMING CLEANING.

Drain the remaining water in the tank and clean the tank after every use.

Please use detergent to clean the accessories (jet nozzle and round brushes) when they are dirty, then wash with clean water and air dry.

How to decalcify the water tank interior:

To clean calcium deposits that build up inside the water tank, add one or two tablespoons of white vinegar to a full water tank, close the water tank cap and shake the contents. DO NOT TURN THE STEAMER ON.

Let the unit sit for a few hours. Then, empty the water tank and refill with clean water and empty until it rinses clear.

### WARNING

DO NOT IMMERSE THE H2O X5<sup>®</sup> APPLIANCE IN WATER.

- Cleaning procedure to remove lime scale

If your H2O X5<sup>®</sup> appliance begins to produce steam slower than usual or stops producing steam you may need to remove lime scale.

Lime scale can develop over time on the metal parts and greatly affect product performance.

It is necessary to remove lime scale on a regular basis, every 25 - 50 times you use a full tank of water or at least once a month, especially in areas with hard water.

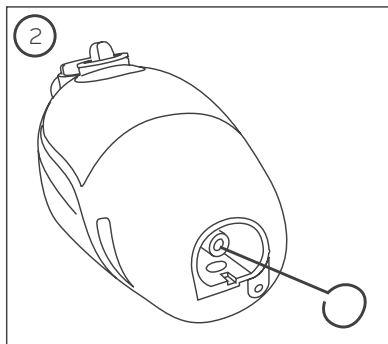
The frequency of lime scale removal depends upon the hardness of your tap water and how often you use the H2O X5<sup>®</sup> appliance.

The H2O X5<sup>®</sup> appliance uses tap water. However, in areas with hard water, distilled water should be used for better performance.

To remove lime scale from the H2O X5<sup>®</sup> appliance, please follow the procedures overleaf.

**To remove limescale by using the cleaning pin**

1. Make sure that the H2O X5® appliance is disconnected from the power supply before maintenance.
2. Use the Cleaning Pin to remove scale deposits from the small hole of the steam outlet in the Main Body, as illustrated in Fig. 2.



By swirling and pushing the pin up and down you will clean the steam outlet. Always ensure that all scale debris have been removed from the steam outlet before reassembling. Continue swirling Cleaning Pin until no further debris is evident.

**To remove limescale by using cleaning solution**

1. We recommend using the specially formulated and ready to use H2O™ Descaler by adding ½ bottle (125ml) to your water tank and filling the remainder of the tank to the MAX indicator with tap or distilled water. Alternatively you can use a solution of 1:1 of white vinegar and water, ( ½ half white vinegar (not malt vinegar) and ½ tap or distilled water). For best results, we recommend that you leave the solution in the tank overnight or for at least 12 hours.
2. Secure and position the unit to ensure steam released is aimed away from the floor or surrounding objects and surfaces. Plug the unit in, turn the unit ON by pressing the Power Switch ( O / I ) and allow the unit to produce steam until the descaler or vinegar/water solution is used up.
3. Repeat the above procedure as many times as necessary until a normal steam flow rate is achieved. Do bear in mind that the best and most effective results will be obtained with the specially formulated H2O™ Descaler.
4. Fill the Water Tank with fresh water and rinse out.
5. Fill the Water Tank with fresh water, switch the unit ON and release the steam through the system until the Water Tank is empty.

**⚠ WARNING**

**Do not leave the steamer unattended during the lime scale removal process and/or while in use.**

**NOTICE**

Perform a test cleaning on a suitable isolated area after each lime scale removal to ensure that there is no debris left in the system.

**⚠ WARNING**

**DANGER OF SCALDING**

- Cleaning blocked H2O X5® accessories.  
Due to the high mineral content of water in some areas, you may notice that less steam comes out from the hand-held steamer accessories. This may be caused by calcium buildup inside the tip of the nozzle.  
How to clean calcium buildup:  
We recommend using a spray lubricant. Spray a small burst or two of the lubricant inside the tip of the Jet Nozzle. After spraying lubricant inside the component, fill the H2O X5® with water according to the directions and run a continuous jet of steam through the affected accessory for several minutes to remove the deposit. Once the steam pathway is clear, aim the steamer at a neutral surface or a cleaning cloth to make sure no debris is emitted.

**WE RECOMMEND PREFORMING THIS PROCEDURE IN A PROTECTED AND WELL-VENTILATED AREA.**

**⚠ WARNING**

**Steam or water discharged from the safety pressure release valve can be very hot. At all times during use, always make sure to keep body parts clear of the safety pressure release valve to avoid being burned by hot steam or water in the event of discharge.**

**Microfiber and super absorbent cloth care:**

- Machine wash at 60 °C (140 °F)
- Do not bleach
- Do not use fabric softener
- Wash colours separately





# Troubleshooting Guide

**⚠ WARNING**

TO REDUCE THE RISK OF FIRE, ELECTRIC SHOCK OR INJURY, UNPLUG APPLIANCE FROM OUTLET BEFORE SERVICING.

Problem	Possible Cause	Solution
The unit does not power on	The unit is not plugged in or turned ON	Make sure the unit is plugged into a proper outlet and the switch is ON ( I ).
Reduced steam or no steam	Water tank empty	Fill water tank.
	Blocked steam nozzle	Remove mop head and clean nozzle.
	Lime scale deposit	Follow cleaning procedure in this User Manual to remove lime scale.
Steam escapes from connections	Attachment is not connected properly	Turn the unit OFF, allow it to cool down, disconnect the accessories and reattach them properly.
	Debris or obstructions at the connection points	Remove the accessory, check and clean connection points.
The cleaning cloth becomes wet	The cloth gets saturated with water	Remove wet cloth and replace with a new cleaning cloth (Optional item) or allow cloth to cool, then wring out and reattach.
Unit 'spitting' when on 'Hot Spray' setting 4	The 'Hot Spray' setting 4 is designed to emit water rather than just steam.	If you require just steam, turn the unit down to a lower setting.
Unit leaking or spitting after it has been unplugged from mains.	The unit has not been switched off using the on / off button.	Ensure you switch off the unit using the on / off button before unplugging from the mains.



# Notes:

---

---

---

---

---

---

---

---

---

---

---

---

---

---

---

---

---

---

---

---

---

---

---

---



# H2O X5<sup>®</sup> Accessories

Visit [www.X5mop.tv](http://www.X5mop.tv) for all your genuine H2O X5<sup>®</sup> accessories and replacement pads.



## Microfibre Cloths

Strong, absorbent and washable. Suitable for all types of sealed floor.

Contains:  
3 x Microfibre replacement cloth pads



## Super Absorbent Cloths

Made from ultra-absorbent, extra strong microfibre, H2O™ Super Absorbent Cloths mean super-efficient cleaning and even faster drying. Machine washable.

Contains:  
2 x Super Absorbent replacement cloth pads



## Super Clean Pack

The complete replacement pad kit for your H2O X5<sup>®</sup> appliance. Everything you need for effective cleaning all around the home.

Contains:  
1 x mop head Microfibre Cloth  
1 x mop head Super Absorbent Cloth  
1 x window tool Super Absorbent Cloth  
1 x duster Super Absorbent Cloth  
1 x garment tool Microfibre Cloth



# Premium Pack

The ultimate value kit for your H2O X5<sup>®</sup> appliance. If you have a large family or use your H2O X5<sup>®</sup> appliance regularly, you'll benefit from this bundle pack of essentials. 4 Microfibre Cloths and 3 Super Absorbent Cloths give you smart cleaning power and versatility, and you also get replacement cloths for your garment steamer tool, window cleaner tool and duster tool.

Contains:  
4 x mop head Microfibre cloths  
3 x mop head Super Absorbent Cloths  
1 x window tool Super Absorbent Cloth  
1 x duster Super Absorbent Cloth  
1 x garment tool Microfibre Cloth



# Elite Hand-Held Pack

Make using your H2O X5<sup>®</sup> appliance as a hand-held even easier. The comfortable, adjustable shoulder strap increases manoeuvrability, and the Microfibre Cloths with safe scrub strips give deep cleaning without damaging your surfaces. Colour coded heavy-duty nylon brushes tackle tough grime and stains, and the H2O X5<sup>®</sup> storage bag keeps your H2O X5<sup>®</sup> appliance and accessories in one place.

Contains:  
1 x shoulder strap & cradle  
2 x Microfibre Cloths with safe scrub strips  
3 x colour coded Nylon Scrubbing Brushes  
1 x storage bag

